

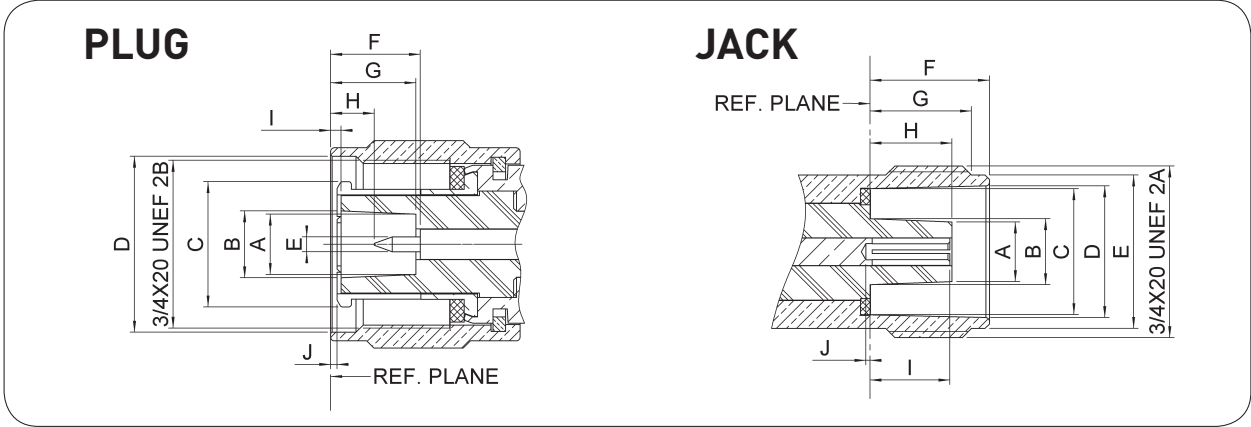
**HN / HN2 / BR2 / BD2 /
High voltage (BNC HT / SHV / MQ HT / THT 20) series**

R176 / R616 / R605 / R606 / R316 / R317 / R321 / R331

RADIAL 
The next conneXion

| | Pages |
|-----------------------|-------|
| HN | |
| Interface | 15-4 |
| Plugs | 15-4 |
| Jack | 15-5 |
| Receptacle | 15-5 |
| Adapter | 15-5 |
| Caps | 15-6 |
| Panel drilling | 15-6 |
| HN2 | |
| Interface | 15-6 |
| Characteristics | 15-7 |
| Plug | 15-7 |
| Receptacle | 15-7 |
| Adapter | 15-7 |
| Panel drilling | 15-7 |
| BR2 | |
| Interface | 15-8 |
| Characteristics | 15-8 |
| Plugs | 15-9 |
| Jacks | 15-9 |
| Receptacles | 15-10 |
| Caps | 15-10 |
| Gasket | 15-11 |
| Panel drilling | 15-11 |
| BD2 | |
| Interface | 15-12 |
| Plug | 15-12 |
| Receptacle | 15-12 |
| Panel drilling | 15-12 |
| HIGH VOLTAGE | |
| Introduction | 15-13 |
| BNC HT | |
| Characteristics | 15-13 |
| Plugs | 15-14 |
| Jacks | 15-14 |
| Receptacles | 15-14 |
| Adapters | 15-15 |
| Cap | 15-15 |
| Gasket | 15-15 |
| SHV | |
| Characteristics | 15-16 |
| Plugs | 15-17 |
| Jacks | 15-17 |
| Receptacles | 15-18 |
| Adapter | 15-18 |
| Miniquick HT | |
| Characteristics | 15-18 |
| Plugs | 15-19 |
| Jacks | 15-19 |
| Receptacles | 15-19 |
| THT 20 | |
| Characteristics | 15-20 |
| Plugs | 15-21 |
| Receptacles | 15-21 |
| Cap | 15-21 |
| Panel drilling | 15-22 |

INTERFACE



| Letter | mm | | inch | |
|--------|-------|-------|------|------|
| | min. | max. | min. | max. |
| A DIA | 6.7 | 6.8 | .264 | .268 |
| B DIA | 7.4 | 7.5 | .291 | .295 |
| C DIA | 13.85 | 13.95 | .545 | .549 |
| D DIA | 19.39 | 19.59 | .763 | .771 |
| E DIA | 1.62 | 1.66 | .064 | .065 |
| F | 9.3 | 10.1 | .366 | .398 |
| G | 9.2 | 9.7 | .362 | .382 |
| H | 3.9 | 5.3 | .154 | .209 |
| I | 0.15 | 0.55 | .006 | .022 |
| J | -0.5 | 0.3 | .020 | .012 |

| Letter | mm | | inch | |
|--------|-------|-------|-------|------|
| | min. | max. | min. | max. |
| A DIA | 6.55 | 6.65 | .258 | .262 |
| B DIA | 7.25 | 7.35 | .285 | .289 |
| C DIA | 13.91 | 14.01 | .548 | .552 |
| D DIA | 14.54 | 14.64 | .572 | .576 |
| E DIA | 16.91 | 17.01 | .666 | .670 |
| F | 13.2 | 13.25 | .520 | .522 |
| G | 11.1 | 11.35 | .437 | .447 |
| H | 8.75 | 9.25 | .344 | .364 |
| I | 8.55 | 9.15 | .337 | .360 |
| J | -1.05 | 0.15 | -.041 | .006 |

PLUGS

STRAIGHT PLUGS CLAMP TYPE

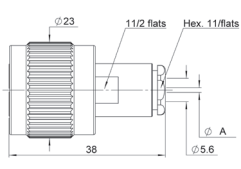


Fig. 1

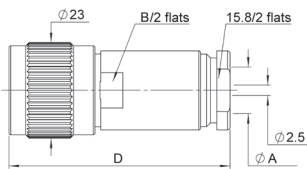


Fig. 2

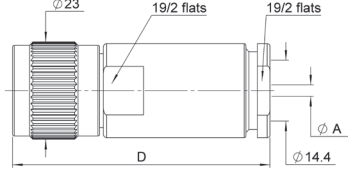


Fig. 3

| Cable group | Cable group dia. | Part number | Fig | Dimensions mm | | | Note |
|---|------------------|---------------------|-----|---------------|------|------|------|
| | | | | A | B | D | |
| RG58/RG141/RG142/RG223/RG400 RG59/RG62 | 5/50/S+D | R176 006 000 | 1 | 5.6 | | | |
| | 6/75/S+93 | R176 012 000 | | 6.5 | | | |
| RG213/RG393/RG214 | 10+11/50/S+D | R176 018 000 | 2 | 11.2 | 17 | 49 | |
| | | R176 019 000 | | | 15.8 | 56.5 | |
| | | R176 021 000 | | | 17 | 53 | |
| | 14/50 | R176 027 000 | 3 | 2.5 | | 63 | |
| | | R176 027 520 | | | | 2.7 | |

STRAIGHT JACK CLAMP TYPE

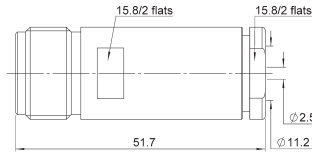


Fig. 1

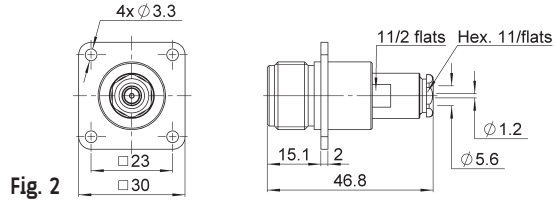


Fig. 2

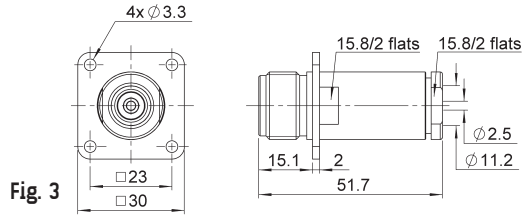
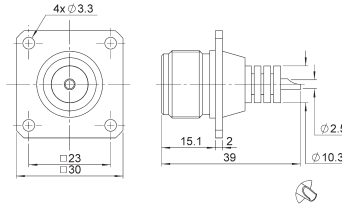


Fig. 3

| Cable group | Cable group dia. | Part number | Fig | Panel drilling | Note |
|------------------------------|------------------|--------------|-----|----------------|---------------|
| RG213/RG393/RG214 | 10+11/50 | R176 218 000 | 1 | | |
| RG58/RG141/RG142/RG223/RG400 | 5/50/S+D | R176 256 000 | 2 | P02 | square flange |
| RG213/RG393/RG214 | 10+11/50 | R176 268 000 | 3 | | |

FLANGE RECEPTACLE



| Part number | Panel drilling | Note |
|--------------|----------------|----------------------------|
| R176 404 000 | P02 | square flange - solder pot |

IN SERIES ADAPTERS

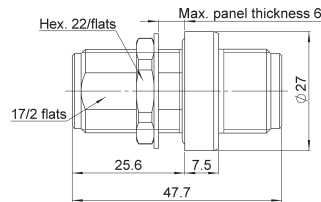


Fig. 1

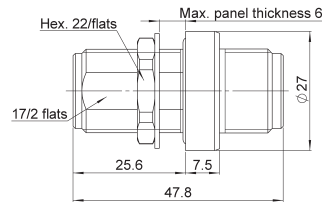


Fig. 2

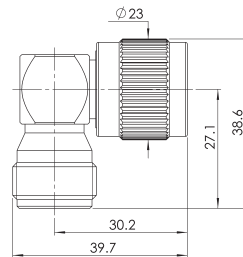


Fig. 3

| Part number | Fig | Panel drilling | Note |
|--------------|-----|----------------|---|
| R176 754 000 | 1 | P01 | bulkhead female-female - splashproof panel seal |
| R176 754 150 | 2 | | bulkhead female-female - splashproof panel seal - ceramic insulator |
| R176 770 000 | 3 | | right angle - male-female |

To download data sheets and assembly instructions, visit www.radiall.com & enter the part number in the Search box.
Bold part numbers represent products typically in stock & available for immediate shipment.
 See page 8 and 9 for packaging information.

CAPS

CAPS

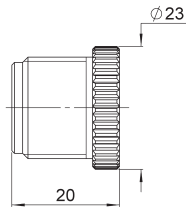


Fig. 1

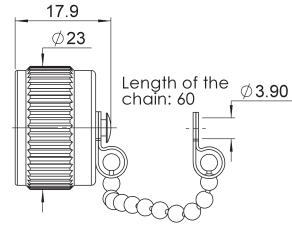


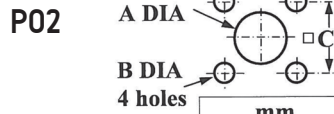
Fig. 2

| Part number | Fig | Note |
|--------------|-----|---------------------------|
| R176 830 010 | 1 | protective cap |
| R176 811 000 | 2 | protective cap with chain |

PANEL DRILLING



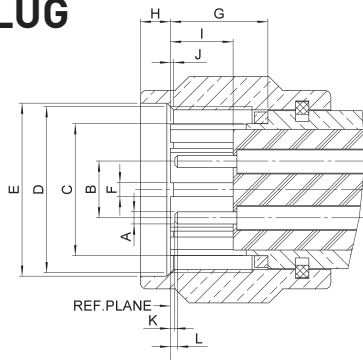
| | mm | |
|---|------|------|
| | Maxi | mini |
| A | 19.3 | 19.2 |
| B | 17.3 | 17.2 |



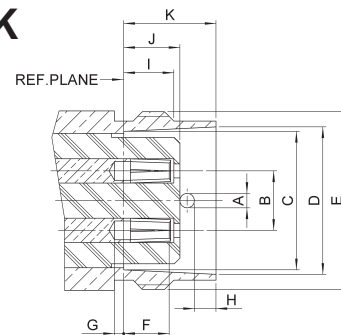
| | mm | |
|---|------|------|
| | Maxi | mini |
| A | 19.5 | 19.4 |
| B | 3.5 | 3.4 |
| C | 23.1 | 23 |

INTERFACE HN2

PLUG



JACK



| Letter | mm | | inch | |
|--------|----------------|-------|----------------|-------|
| | min. | max. | min. | max. |
| A DIA | 1.31 | 1.37 | 0.052 | 0.054 |
| B | 6.3 | 6.4 | 0.248 | 0.252 |
| C DIA | 15.0 | 15.15 | 0.591 | 0.596 |
| D | 3/4X20 UNEF 2B | | 3/4X20 UNEF 2B | |
| E DIA | 19.4 | 19.6 | 0.764 | 0.772 |
| F | 1.57 | 1.62 | 0.062 | 0.064 |
| G | 11 | 11.2 | 0.433 | 0.441 |
| H | 3.0 | 3.75 | 0.118 | 0.148 |
| I | 6.2 | 6.45 | 0.244 | 0.254 |
| J | -0.55 | 0.5 | -0.022 | 0.02 |
| K | -0.28 | 0.725 | 0.011 | 0.029 |
| L | 0.125 | 1.31 | 0.005 | 0.052 |

| Letter | mm | | inch | |
|--------|----------------|-------|----------------|-------|
| | min. | max. | min. | max. |
| A DIA | 1.47 | 1.55 | 0.058 | 0.061 |
| B DIA | 6.3 | 6.4 | 0.248 | 0.252 |
| C DIA | 14.75 | 14.85 | 0.581 | 0.585 |
| D DIA | 15.65 | 15.85 | 0.616 | 0.624 |
| E | 3/4X20 UNEF 2A | | 3/4X20 UNEF 2A | |
| F | 4.65 | 5.8 | 0.183 | 0.228 |
| G | 0.75 | 1.75 | 0.03 | 0.069 |
| H | 2.275 | 2.46 | 0.09 | 0.097 |
| I | 4.21 | 4.51 | 0.166 | 0.178 |
| J | 5.95 | 6.3 | 0.234 | 0.248 |
| K | 9.81 | 9.91 | 0.386 | 0.39 |

CHARACTERISTICS

ELECTRICAL CHARACTERISTICS

| | |
|---------------------------|---------------|
| Frequency range | DC to 500 MHz |
| Impedance | 95Ω |
| Test voltage at sea level | 500 V peak |
| Insulation resistance | > 5000 MΩ |

MECHANICAL CHARACTERISTICS

| | |
|-----------|---------------------------------|
| Life | 500 matings |
| Vibration | 1/2 sinusoidal (severity 100 A) |

ENVIRONMENTAL

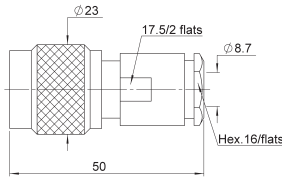
| | |
|-------------------|---------------|
| Temperature range | -50°C + 125°C |
| Salt spray | 48 Hrs |

MATERIALS

| | |
|-------------------------|-------------------------------|
| Contacts and interfaces | Heat treated beryllium copper |
| Other pieces | Brass |
| Insulator | Rexolite |
| Gasket | Silicone rubber |

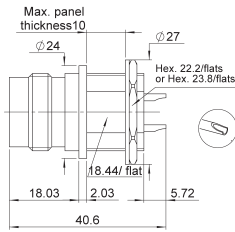
PLUG, RECEPTACLE AND ADAPTER

STRAIGHT PLUG CLAMP TYPE



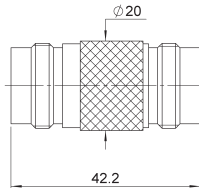
| Cable group dia. | Part number | Note |
|------------------|--------------|---------------------------------------|
| twinaxial 8 | R616 008 000 | Belden P/N Y 15662 IBM P/N 7362211 |

BULKHEAD RECEPTACLE, SOLDER POT



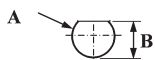
| Part number | Panel drilling |
|--------------|----------------|
| R616 549 000 | P01 |

IN SERIES ADAPTER



| Part number | Note |
|--------------|-----------------|
| R616 705 000 | female - female |

P01



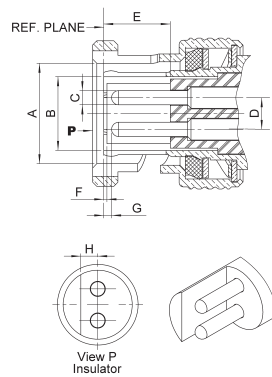
| | mm | |
|---|-------|-------|
| | Maxi | mini |
| A | 19.33 | 19.2 |
| B | 18.64 | 18.44 |

PANEL DRILLING

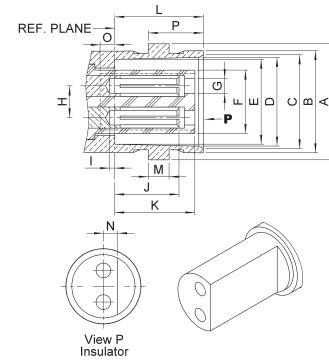
To download data sheets and assembly instructions, visit www.radiall.com & enter the part number in the Search box.
Bold part numbers represent products typically in stock & available for immediate shipment.
 See page 8 and 9 for packaging information.

INTERFACE

PLUG



JACK



| Letter | mm | | inch | |
|--------|-------|------|------|------|
| | min. | max. | min. | max. |
| A DIA | 9.78 | 9.91 | .385 | .390 |
| B DIA | 6.70 | 6.77 | .264 | .267 |
| C DIA | 1.31 | 1.36 | .052 | .054 |
| D | 2.95 | 3.05 | .116 | .120 |
| E | 7.6 | 7.9 | .299 | .311 |
| F | -0.05 | 0.15 | .002 | .006 |
| G | 0.85 | 1.55 | .033 | .061 |
| H | 1.55 | 1.65 | .061 | .065 |

| Letter | mm | | inch | |
|--------|-------|-------|-------|------|
| | min. | max. | min. | max. |
| A DIA | 10.93 | 11.09 | .430 | .437 |
| B DIA | 9.60 | 9.70 | .378 | .382 |
| C DIA | 8.79 | 9.04 | .346 | .356 |
| D DIA | 8.31 | 8.46 | .327 | .333 |
| E DIA | 8.09 | 8.15 | .319 | .321 |
| F DIA | 5.9 | 6.0 | .232 | .236 |
| G DIA | 1.4 | 1.45 | .055 | .057 |
| H | 2.95 | 3.05 | .116 | .120 |
| I | -0.1 | 0.8 | -.004 | .031 |
| J | 5.3 | 5.7 | .209 | .224 |
| K | 7.05 | 7.35 | .278 | .289 |
| L | 8.36 | 8.46 | .327 | .335 |
| M | 1.91 | 2.06 | .075 | .081 |
| N | 1.45 | 1.55 | .057 | .061 |
| O | 0.35 | 0.85 | .014 | .033 |

CHARACTERISTICS

Bayonet lock coupling with polarisation

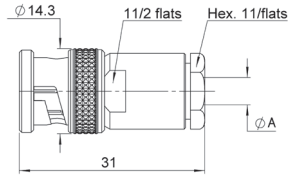
ELECTRICAL AND ENVIRONMENTAL CHARACTERISTICS

| | | |
|---------------------------------|---------------------------------------|-----------------------|
| Dielectric withstanding voltage | between pins between pins and body | 1500 volts RMS, 50 Hz |
| Maximum intensity | | 3.5 Amp |
| Insulation resistance | between pins between pins and body | > 10 ⁵ MΩ |
| Contact resistance | | < 1 mΩ at 1 Amp |
| Capacity at 1 MHz | between pins between pins and body | < 1.3 pF < 3.2 pF |
| Frequency range | | DC - 0.5 GHz |
| Temperature range | | -40 +100° C |

MATERIALS

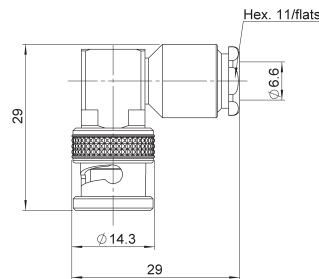
| | |
|------------------------------|------------------------------|
| All metal parts under stress | Beryllium copper |
| Other metal parts | Brass |
| Insulators | Polyamide and diallyphtalate |
| Gaskets | Neoprene |

STRAIGHT PLUGS FOR ARMOUR TWINAXIAL CABLE



| Cable group dia | Part number | Dimensions (mm) A |
|-----------------|---------------------|-------------------|
| twinaxial 4 | R605 004 000 | 4.6 |
| twinaxial 5 | R605 005 000 | 5.6 |
| twinaxial 6 | R605 006 000 | 6.6 |

RIGHT ANGLE PLUG



| Cable group dia | Part number |
|-----------------|---------------------|
| twinaxial 6 | R605 156 000 |

STRAIGHT JACKS

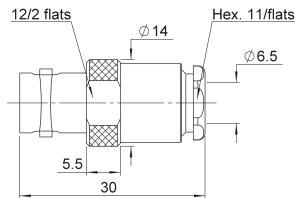
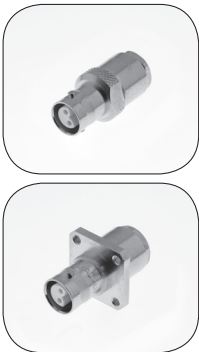


Fig. 1

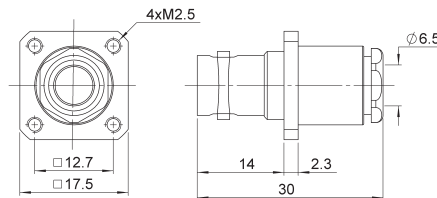


Fig. 2

| Cable group dia | Part number | Fig | Panel drilling | Note |
|-----------------|---------------------|-----|----------------|---------------|
| twinaxial 6 | R605 206 000 | 1 | P01 | square flange |
| | R605 256 000 | 2 | | |

To download data sheets and assembly instructions, visit www.radiall.com & enter the part number in the Search box.
Bold part numbers represent products typically in stock & available for immediate shipment.
 See page 8 and 9 for packaging information.

RECEPTACLES AND CAPS

RECEPTACLES

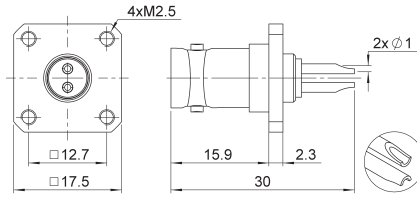


Fig. 1

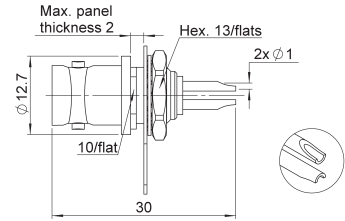


Fig. 2

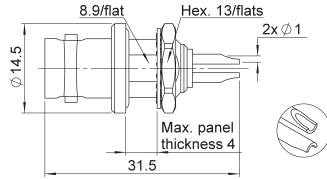


Fig. 3

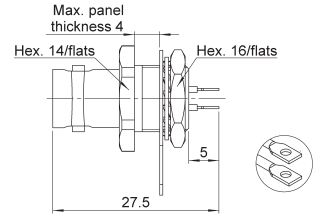
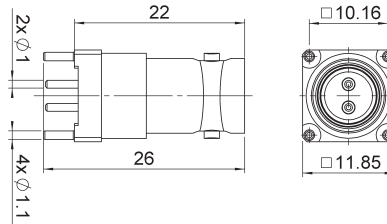


Fig. 4

| Part number | Fig | Panel drilling | Note |
|--------------|-----|----------------|----------------------------------|
| R605 400 000 | 1 | P02 | Square flange |
| R605 550 000 | 2 | P04 | Rear fixing |
| R605 550 020 | | | Front mounting |
| R605 600 000 | 3 | P05 | Waterproof |
| R605 610 000 | 4 | P06 | Hermetically sealed glass - seal |

PCB RECEPTACLES



| Part number | Panel drilling |
|--------------|----------------|
| R605 440 000 | P03 |

CAPS

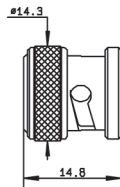


Fig. 1

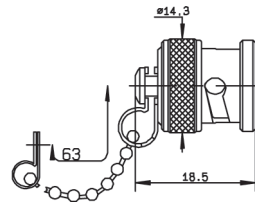


Fig. 2

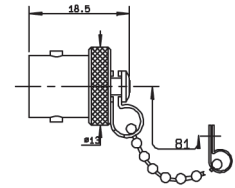
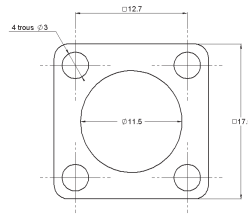


Fig. 3

| Part number | Fig. | Note |
|--------------|------|-------------------|
| R141 802 000 | 1 | Male |
| R141 812 000 | 2 | Male with chain |
| R141 842 000 | 3 | Female with chain |

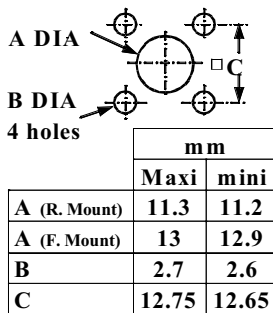
GASKET



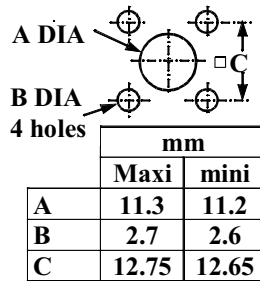
| |
|--------------|
| Part number |
| R280 503 000 |

PANEL DRILLING

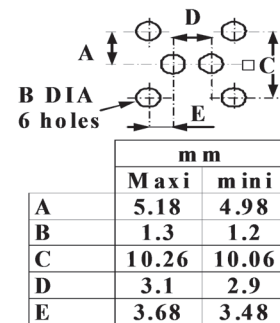
P01



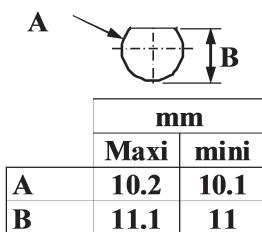
P02



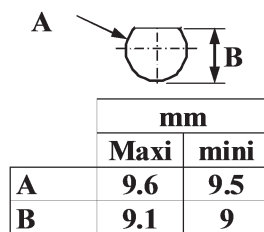
P03



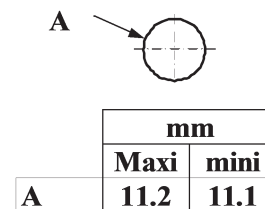
P04



P05

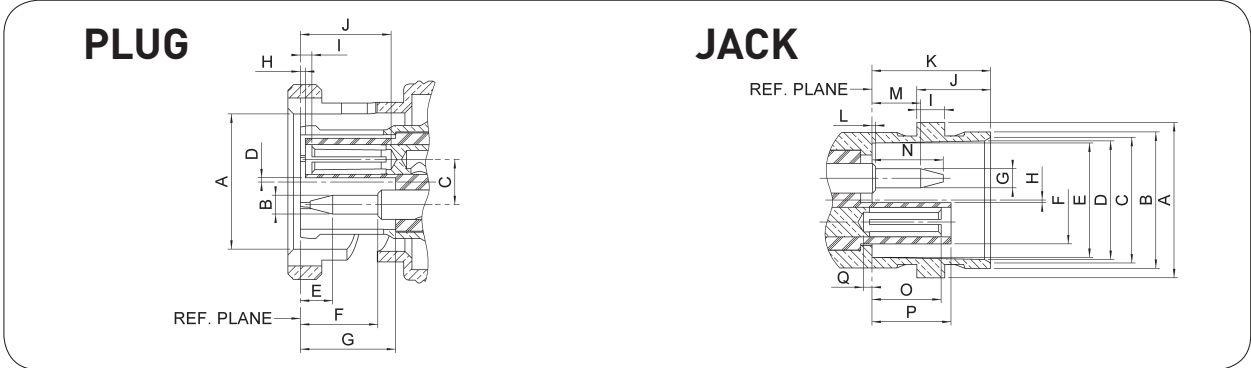


P06



To download data sheets and assembly instructions, visit www.radiall.com & enter the part number in the Search box.
Bold part numbers represent products typically in stock & available for immediate shipment.
 See page 8 and 9 for packaging information.

INTERFACE

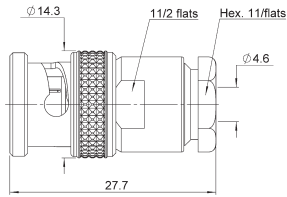


| Letter | mm | | inch | |
|--------|------|------|------|------|
| | min. | max. | min. | max. |
| A DIA | 9.78 | 9.91 | .385 | .390 |
| B DIA | 1.32 | 1.37 | .052 | .054 |
| C | 3.05 | 3.15 | .120 | .124 |
| D | 0.05 | --- | .002 | --- |
| E | 1.95 | 2.95 | .077 | .116 |
| F | 6.45 | 6.95 | .254 | .274 |
| G | 5.35 | 6.15 | .211 | .242 |
| H | 0.15 | --- | .006 | --- |
| I | 0.7 | 1.3 | .028 | .051 |
| J | 5.9 | 7 | .232 | .276 |

| Letter | mm | | inch | |
|--------|-------|-------|-------|------|
| | min. | max. | min. | max. |
| A DIA | 10.93 | 11.09 | .430 | .437 |
| B DIA | 9.60 | 9.70 | .378 | .382 |
| C DIA | 8.79 | 9.04 | .346 | .356 |
| D DIA | 8.31 | 8.46 | .327 | .333 |
| E DIA | 8.09 | 8.15 | .319 | .321 |
| F DIA | --- | 6.25 | --- | .246 |
| G DIA | 1.32 | 1.37 | .052 | .054 |
| H | 0.05 | --- | .002 | --- |
| I | 1.91 | 2.07 | .075 | .081 |
| J | 5.18 | 5.28 | .204 | .208 |
| K | 8.31 | 8.51 | .327 | .335 |
| L | -0.05 | 0.55 | -.002 | .022 |
| M | 2.95 | 3.95 | .116 | .156 |
| N | 4.55 | 5.55 | .179 | .219 |
| O | 4.6 | 5.2 | .181 | .206 |
| P | 5.45 | 5.75 | .215 | .226 |
| Q | 0.495 | 0.605 | .019 | .024 |

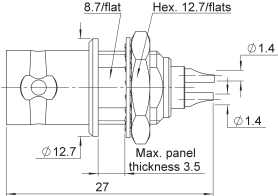
PLUG AND RECEPTACLE

STRAIGHT PLUG



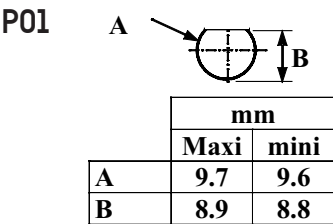
| Cable group dia | Part number |
|-----------------|--------------|
| 4 mm | R606 004 000 |

BULKHEAD RECEPTACLE



| Part number | Panel drilling |
|--------------|----------------|
| R606 550 000 | P01 |

PANEL DRILLING



This catalogue features 4 series of high voltage coaxial connectors, able to withstanding continuous voltages up to 20 000 V.

TEST VOLTAGES

The test voltages quoted in this catalogue are indicative only. They correspond to those made under normal atmospheric conditions during a test period of 1 minute as specified in the French standard NF EN 60068 - 1.

OPERATING VOLTAGES

The operating voltage is chosen under the responsibility of users, depending on the conditions in which the connectors will be used (environmental, safety factor...). The indicated cables are recommended for the mechanical and dimensional suitability with our connectors. As to the electrical characteristics of the cables and in particularly the maximum voltage capacity, it is necessary to conform with the recommendation of the cable manufacturer.

CHARACTERISTICS BNC HT

The connectors of this series are not intermateable with those of the BNC and SHV series.

ELECTRICAL CHARACTERISTICS

| | | |
|----------------------|---------------------------|---------------|
| Frequency range | DC - 2 GHz | |
| Impedance | 50Ω | |
| VSWR (plug and jack) | 1.20 + 0.2 F (GHz) | |
| Test voltage | unmated (male) connectors | 6 000 V D.C. |
| | (female) | 8 000 V D.C. |
| | mated pair | 10 000 V D.C. |
| Current rating | 10 A | |

MECHANICAL AND ENVIRONMENTAL CHARACTERISTICS

| | |
|-------------------|---|
| Mating cycles | 500 |
| Vibration | 20 g - 2 000 Hz |
| Shock | 50 g |
| Salt spray | 48 H |
| Temperature range | - 55°C + 155°C - 40°C + 70°C (with polyethylene insulator) |

MATERIALS AND PLATING

| Components | Materials | Platings |
|-------------------|---------------------------|----------|
| Body | Brass | Nickel |
| Center contact | Brass / Beryllium copper | Silver |
| Other metal parts | Brass or Beryllium copper | Nickel |
| Insulator | PTFE / Polyethylene | |
| Gasket | Silicone rubber | |

All dimensions are given in mm

PLUGS, JACKS AND RECEPTACLES

STRAIGHT PLUGS FOR FLEXIBLE CABLES

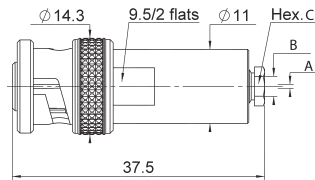


Fig. 1

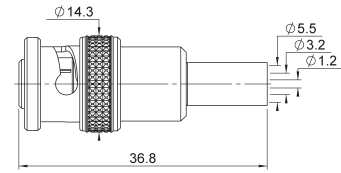


Fig. 2

| Cable group | Cable group dia. | Part number | Fig. | Dimensions | | | Note |
|-------------------------------|------------------|---------------------|------|------------|--------|-----------|------------|
| | | | | A dia. | B dia. | Hex. C | |
| RG174/RG316/RD316/RG179/RD179 | 2.6/50+75/S + D | R316 004 000 | 1 | 0.6 | 3 | 5/flats | Clamp type |
| RG58/RG141/RG142/RG223/RG400 | 5/50/S + D | R316 007 000 | 1 | 1.2 | 5.6 | 9.5/flats | |
| RG59/RG62 | 6/75/S | R316 011 000 | 1 | 1.2 | 6.5 | 9.5/flats | |
| RG58/RG141 | 5/50/S | R316 072 000 | 2 | | | | Crimp type |

STRAIGHT JACKS CLAMP TYPE FOR FLEXIBLE CABLES

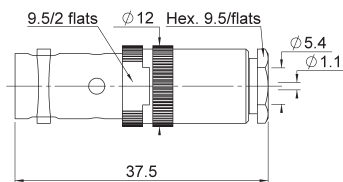


Fig. 1

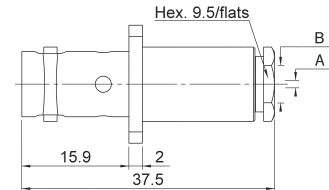


Fig. 2

| Cable group | Cable group dia. | Part number | Fig. | Dimensions | | Panel Drilling |
|------------------------------|------------------|---------------------|------|------------|--------|----------------|
| | | | | A dia. | B dia. | |
| RG58/RG141/RG142/RG223/RG400 | 5/50/S + D | R316 207 000 | 1 | 1.1 | 5.4 | P01 |
| | | R316 257 000 | 2 | | 6.5 | |
| RG59/RG62 | 6/75/S | R316 261 000 | | | | |

RECEPTACLES

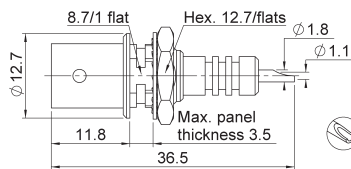


Fig. 1

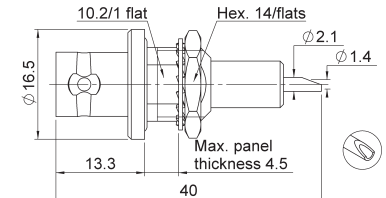


Fig. 2

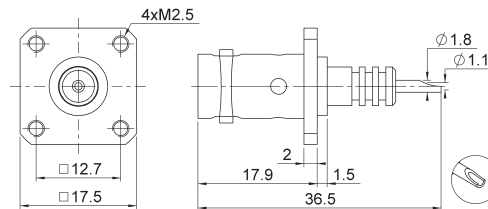


Fig. 3

| Part number | Fig. | Panel Drilling | Note |
|---------------------|------|----------------|------------------------|
| R316 553 000 | 1 | P02 | Bulkhead |
| R316 603 000 | 2 | P03 | Bulkhead panel seal |
| R316 405 000 | 3 | P01 | Square flange mounting |

IN SERIES ADAPTERS

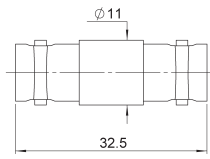


Fig. 1

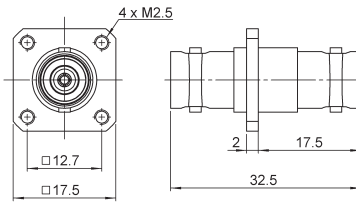


Fig. 2

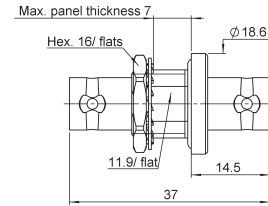


Fig. 3

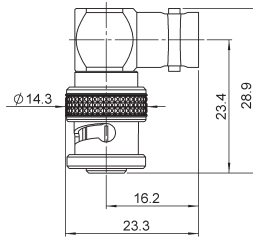


Fig. 4

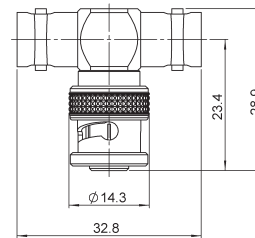
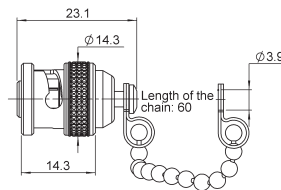


Fig. 5

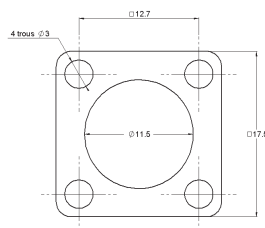
| Part number | Fig. | Panel Drilling | Note |
|--------------|------|----------------|---|
| R316 704 000 | 1 | | Straight female - female |
| R316 714 000 | 2 | P01 | Square flange female - female |
| R316 754 000 | 3 | P04 | Straight bulkhead female - female with panel seal |
| R316 770 000 | 4 | | Right angle male - female polyethylene insulator |
| R316 780 000 | 5 | | Tee female female - male polyethylene insulator |

CAP



| Part number |
|--------------|
| R316 812 000 |

GASKET



| Part number |
|--------------|
| R280 503 000 |

CHARACTERISTICS

These safe high voltage connectors meet all requirements of the NIM Standard (Nuclear Instrumentation Module) Specification ND 545 Amendment A. Both the pin and socket contacts are securely recessed inside the insulation to prevent the danger of electrical shock when live unmated connectors are handled.

They are particularly recommended for impulse circuits of linear accelerators as well as in military, nuclear and medical electronics.

These connectors are not intermateable with those of the BNC and BNC.HT series.

ELECTRICAL CHARACTERISTICS

| | | |
|----------------------|--------------------|----------------------|
| Frequency range | | DC - 2 GHz |
| Impedance | | 50Ω |
| VSWR (plug and jack) | | < 1.20 + 0.3 F (GHz) |
| Contact resistance | center contact | < 2.1 mΩ |
| | outer contact | < 1.5 mΩ |
| Test voltage | unmated connectors | 10 000 V D.C. - 1 mΩ |
| | mated pair | 12 000 V D.C. - 1 mΩ |
| Current rating | | 10 A |

MECHANICAL AND ENVIRONMENTAL CHARACTERISTICS

| | | |
|----------------------------------|--|---|
| Temperature range | | - 65°C + 165°C |
| Mating cycles | | 500 |
| Vibration | | 10 g - 500 Hz to MIL-STD-202, method 204, condition A |
| Shock | | to MIL-STD-202, method 213 B, condition A |
| Salt spray | | to MIL-STD-202, method 101, condition B-48 H |
| Contact to cable retention force | | > 27 N |
| Coupling nut retention force | | > 450 N |
| Cable retention | | > 180 N |

MATERIALS AND PLATING

| Components | Materials | Plating |
|------------------|--------------------------|---------|
| Body | Brass | Nickel |
| Center contact | Brass / Beryllium copper | Gold |
| Other metal part | Brass / Beryllium copper | Nickel |
| Insulator | PTFE | |
| Gasket | Silicone rubber | |

All dimensions are given in mm

STRAIGHT PLUGS FOR FLEXIBLE CABLES

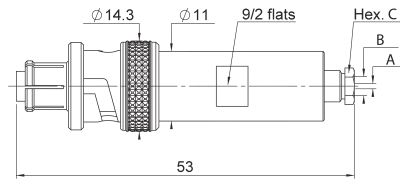


Fig. 1

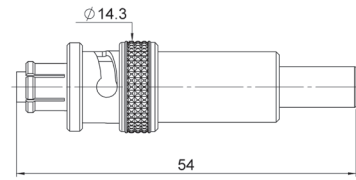


Fig. 2

| Cable group | Cable group dia. | Part number | Fig. | Dimensions | | | Captive center contact | Note |
|---------------------------------|------------------|--------------|------|------------|--------|-----------|------------------------|------------|
| | | | | A dia. | B dia. | Hex. C | | |
| RG58/RG141/RG142 RG223/RG400 | 5/50/S + D | R317 005 000 | 1 | 1.05 | 5.6 | 9.5/flats | Yes | Clamp type |
| RG58/RG141 | 5/50/S | R317 072 000 | 2 | | | | | Crimp type |
| RG59/RG62 | 6/75/S | R317 074 000 | | | | | | |

STRAIGHT JACKS FOR FLEXIBLE CABLES

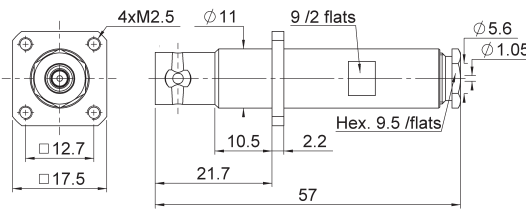
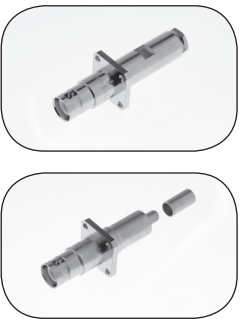


Fig. 1

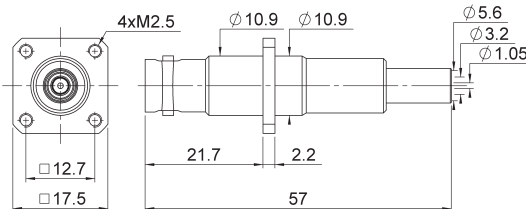


Fig. 2

| Cable group | Cable group dia. | Part number | Fig. | Panel Drilling | Captive center contact | Note |
|---------------------------------|------------------|--------------|------|----------------|--------------------------|--------------------------|
| RG58/RG141/RG142 RG223/RG400 | 5/50/S + D | R317 255 000 | 1 | P01 | Yes | Square flange clamp type |
| RG58/RG141 | 5/50/S | R317 270 000 | 2 | | Square flange crimp type | |

RECEPTACLES AND ADAPTER

RECEPTACLES

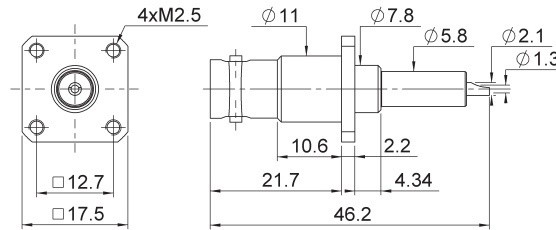
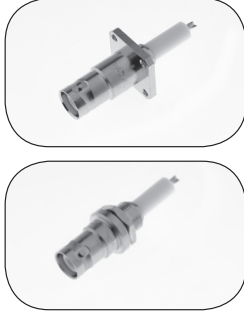


Fig. 1

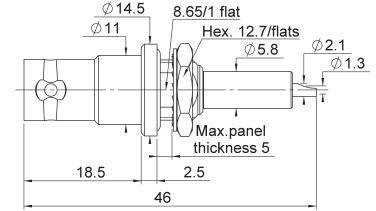
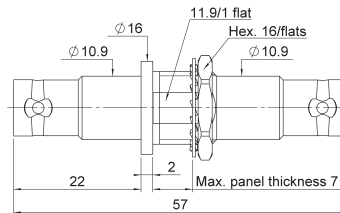


Fig. 2

| Part number | Fig. | Panel Drilling | Note |
|--------------|------|----------------|---------------|
| R317 405 000 | 1 | P05 | Square flange |
| R317 580 000 | 2 | P06 | Bulkhead |

IN SERIES ADAPTER



| Part number | Panel Drilling | Note |
|--------------|----------------|----------------------|
| R317 720 000 | P04 | Bulkhead jack - jack |

CHARACTERISTICS MiniQUICK HT

Snap-on connection with a positive locking system for secure connection.

ELECTRICAL CHARACTERISTICS

| | |
|-------------------------------|--|
| Frequency range | DC - 2 GHz |
| Impedance | 50Ω |
| VSWR (plug and jack) | < 1.20 + 0.3 F (GHz) |
| Test voltage | 7 000 V D.C. |
| unmated connectors | 12 000 V D.C. |
| mated pair | |
| Threshold of corona discharge | 4 500 V r.m.s. - 50 Hz (LCIE certificate N° 137656C) |
| Current rating | 10 A |

MECHANICAL AND ENVIRONMENTAL CHARACTERISTICS

| | |
|-------------------|----------------|
| Temperature range | - 40°C + 100°C |
| Mating cycles | 1 000 |
| Vibration | 20 g - 2000 Hz |
| Shock | 50 g |
| Salt spray | 48 H |

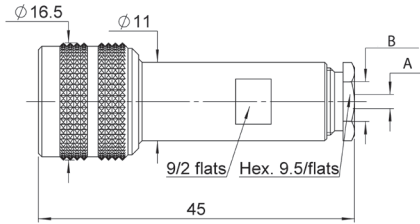
MATERIALS AND PLATING

| Components | Materials | Plating |
|------------------|------------------|---------------|
| Body | Brass | Nickel chrome |
| Center contact | Beryllium copper | Gold / Silver |
| Other metal part | Beryllium copper | Nickel |
| Insulator | PTFE | |
| Gasket | Silicone rubber | |

All dimensions are given in mm

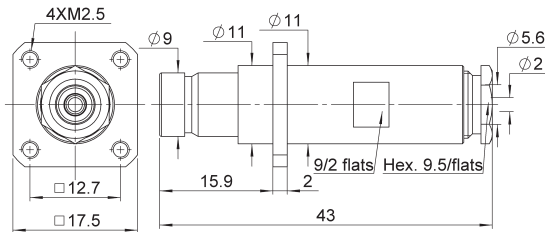
To download data sheets and assembly instructions, visit www.radiall.com & enter the part number in the Search box.
Bold part numbers represent products typically in stock & available for immediate shipment.
 See page 8 and 9 for packaging information.

STRAIGHT PLUGS, CLAMP TYPE FOR FLEXIBLE CABLES



| Cable group | Cable group dia. | Part number | Dimensions | |
|------------------------------|------------------|--------------|------------|-----|
| | | | A | B |
| RG58/RG141/RG142/RG223/RG400 | 5/50/S + D | R321 007 000 | 2 | 5.6 |
| RG59/RG62 | 6/75/S | R321 011 000 | 1.2 | 6.5 |

STRAIGHT JACK, CLAMP TYPE FOR FLEXIBLE CABLES



| Cable group | Cable group dia. | Part number | Panel drilling | Note |
|------------------------------|------------------|--------------|----------------|---------------|
| RG58/RG141/RG142/RG223/RG400 | 5/50/S + D | R321 257 000 | P01 | Square flange |

RECEPTACLES

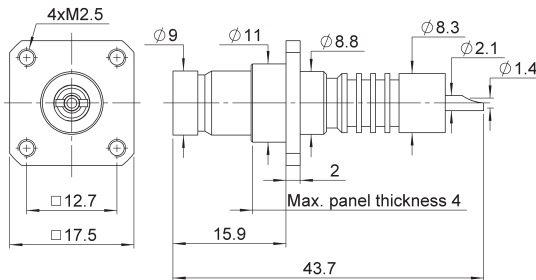


Fig. 1

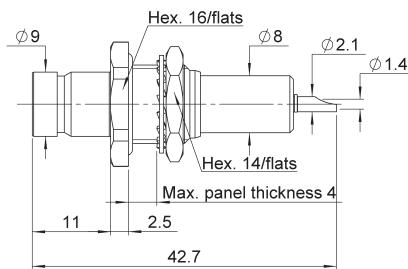


Fig. 2

| Part number | Fig. | Panel drilling | Note |
|--------------|------|----------------|---------------------|
| R321 405 000 | 1 | P07 | Square flange |
| R321 603 000 | 2 | P08 | Bulkhead panel seal |

CHARACTERISTICS

Screw coupling.

Female center contact has a 4 mm internal dia. which allows testing with standard banana plugs.

ELECTRICAL CHARACTERISTICS

| | | |
|-----------------|--------------------|---------------|
| Frequency range | DC - 1 GHz | |
| Impedance | 50Ω | |
| Test Voltage | unmated connectors | 10 000 V D.C. |
| | mated pair | 20 000 V D.C. |
| Current rating | 20 A | |

MECHANICAL AND ENVIRONMENTAL CHARACTERISTICS

| | |
|-------------------|---|
| Temperature range | - 40°C + 70°C (polyethylene or styramic insulators) -55°C + 125°C (PTFE insulator) |
| Mating cycles | 500 |
| Salt spray | 48 H |

MATERIALS AND PLATING

| Components | Materials | Plating |
|------------------|--------------------------|---------------|
| Body | Brass | Nickel |
| Center contact | Brass / Beryllium copper | Gold / Silver |
| Other metal part | Brass | Nickel |
| Insulator | PTFE / Polyethylene | |
| Gasket | Silicone rubber | |

All dimensions are given in mm

STRAIGHT PLUGS, CLAMP TYPE FOR FLEXIBLE CABLES

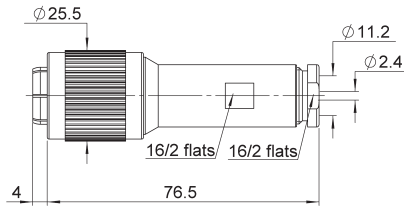


Fig. 1

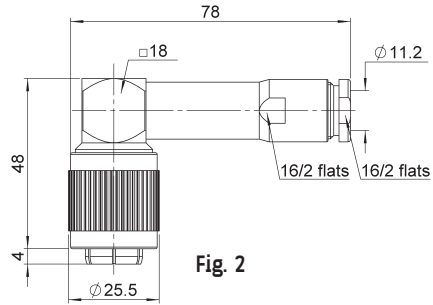


Fig. 2

| Cable group | Cable group dia. | Part number | Fig. | Note |
|-----------------------|-----------------------------|--------------|------|-----------------------|
| RG213/RG393/RG214 | 10/50+75/S + D + 11/50+75/D | R331 018 000 | 1 | Straight/PE insulator |
| RG11/RG12/RG144/RG216 | | R331 168 000 | 2 | Right angle |

RECEPTACLES

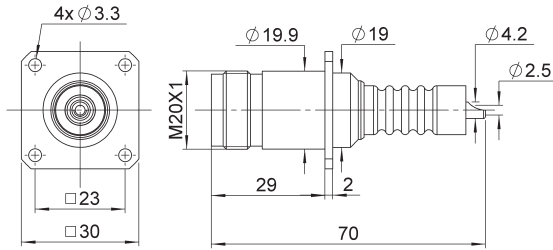


Fig. 1

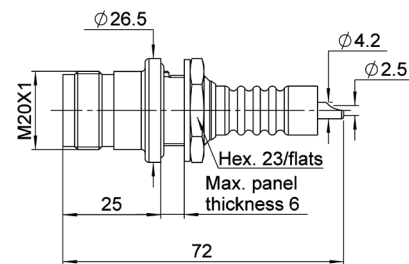
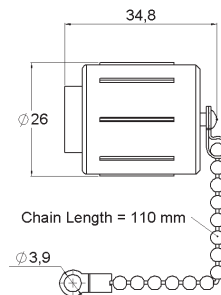


Fig. 2

| Part number | Fig. | Panel drilling | Note |
|--------------|------|----------------|-------------------------------------|
| R331 405 000 | 1 | P09 | Square flange - PTFE insulator |
| R331 603 000 | 2 | P10 | Bulkhead, panel seal PTFE insulator |

CAP

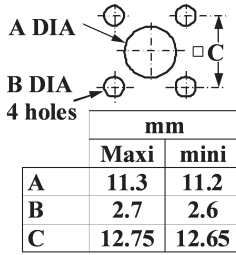


| Part number | Note |
|--------------|---|
| R331 803 000 | For THT 20 female connectors. The body of this cap is entirely made of styramic plastic. |

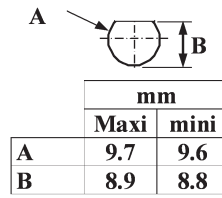
To download data sheets and assembly instructions, visit www.radiall.com & enter the part number in the Search box. **Bold** part numbers represent products typically in stock & available for immediate shipment. See page 8 and 9 for packaging information.

PANEL DRILLING

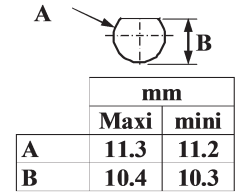
P01



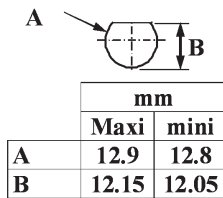
P02



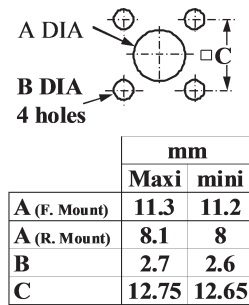
P03



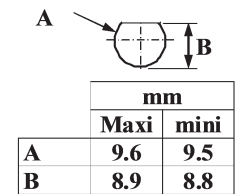
P04



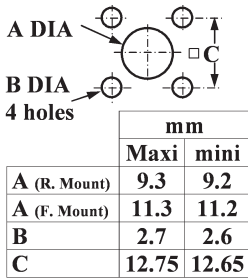
P05



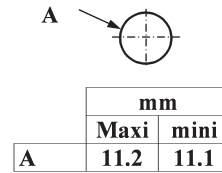
P06



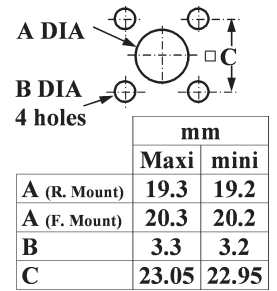
P07



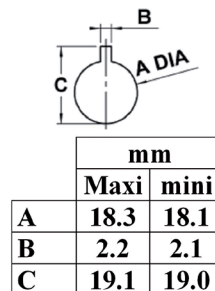
P08



P09



P10





AEROSPACE



AUTOMOTIVE



DEFENSE



INDUSTRIAL



INSTRUMENTATION



MEDICAL



SPACE



TELECOM

EUROPE

France - RADIALL S.A.

101, Rue Ph. Hoffmann
93116 ROSNY sous BOIS (Paris)
Tel.: +33 1 49 35 35 35 - Fax: +33 1 48 54 63 63
E-Mail: info@radiall.com

Finland - RADIALL SF

P.O. Box 202 - 90101 OULU
Tel.: +358 407 522 412
E-Mail: infofi@radiall.com

Germany - RADIALL GmbH

Carl-Zeiss Str. 10 Postfach 200143
D63307 - RÖDERMARK (Frankfurt)
Tel.: +49 60 74 91 07 0 - Fax: +49 60 74 91 07 70
E-Mail: infode@radiall.com

Italy - RADIALL Elettronica S.R.L.

Via Concordia, 5 - 20090 ASSAGO MILANO
Tel.: +39 02 48 85 121 - Fax: +39 02 48 84 30 18
E-Mail: infoit@radiall.com
Regional office: Roma

Netherlands - RADIALL B.V.

Hogebrinkerweg 15b - 3871 KM HOEVELAKEN
Tel.: +31 33 253 40 09 - Fax: +31 33 253 45 12
E-Mail: infofl@radiall.com

Sweden - RADIALL A.B.

Sjöängsvägen 2 - SE-192 72 SOLLENTUNA (Stockholm)
Tel.: +46 844 434 10 - Fax: +46 875 449 16
E-Mail: infose@radiall.com

U.K. - RADIALL Ltd.

Ground Floor, 6 The Grand Union Office Park,
Packet Boat Lane
UXBRIDGE Middlesex UB8 2GH (London)
Tel.: +44 1895 425 000 - Fax: +44 1895 425 010
E-Mail: infouk@radiall.com

NORTH AMERICA

USA - RADIALL USA, Inc.

6825 West Galveston Street
CHANDLER, Arizona 85226
Tel.: +1 480 682 9400 - Fax: +1 480 682 9403
E-Mail: infousa@radiall.com

ASIA

China - SHANGHAI RADIALL Electronic Co., Ltd.

N° 390 Yong He Road 200072 - SHANGHAI
Tel.: +86 21 66 52 37 88 - Fax: +86 21 66 52 11 77
E-Mail: infosh@radiall.com

Japan - NIHON RADIALL

Shibuya-ku Ebisu 1-5-2, Kougetsu Bldg 405
TOKYO 150-0013
Tel.: +81 3 3440 6241 - Fax: +81 3 3440 6242
E-Mail: infojp@radiall.com

Hong Kong - RADIALL Electronics Ltd.

Flat D, 6/F, Ford Glory Plaza,
37-39 Wing Hong Street
Cheung Sha Wan
KOWLOON HONG KONG
Tel: +852-2959-3833 - Fax: +852-2959-2636
E-Mail: infohk@radiall.com

India - RADIALL India Pvt. Ltd.

25 D, II Phase, Peenya Industrial Area
BANGALORE 560058
Tel.: +91 80 83 95 271 - Fax: +91 80 83 97 228
E-Mail: infoin@radiall.com

ALSO REPRESENTED IN

| | | |
|----------------|-------------|--------------|
| Australia | Hungary | Poland |
| Austria | Indonesia | Russia |
| Belgium | Israel | Singapore |
| Brazil | Korea | Spain |
| Czech Republic | Latvia | Switzerland |
| Denmark | Lithuania | Taiwan |
| Estonia | Malaysia | Thailand |
| Greece | Norway | Vietnam |
| | Philippines | South Africa |

For the above countries, please contact the local agent or RADIALL at info@radiall.com

