

4-Way Outlet Shapes, VG style

• Helashrink 400 Series

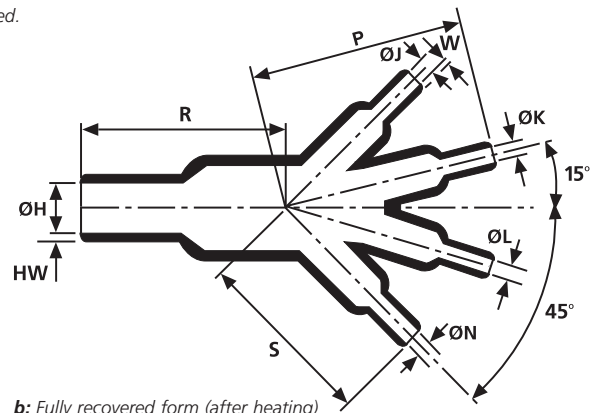
This style provides cable strain relief and mechanical protection at harness transition points, all outlets are clearly marked to aid orientation on installation.



403-1-G supplied / fully recovered.



a: Expanded form (supplied)



b: Fully recovered form (after heating)

Sizes and Type Table										
Type	Designation as per VG-Norm	ØH min. a	ØH max. b	ØJ/K/L/N min. a	ØJ/K/L/N max. b	P ± 10%	R ± 10%	S ± 10%	HW ± 20%	W ± 10%
411-1	VG95343T08E002A	19.0	10.0	9.5	5.5	36.1	35.6	32.0	1.8	1.0
403-1	VG95343T08E004A	27.0	13.0	13.0	7.0	51.8	49.0	45.0	2.5	1.0
413-1	VG95343T08E005A	38.6	19.0	19.0	10.0	74.9	75.0	65.3	1.8	1.0

All dimensions in mm. Subject to technical changes.

Combinations "On request"					
Adhesive	Material				
	B7	G	H	L	J
WM250	√	√	√	-	√
W8	√	√	√	-	√
W24	√	√	√	√	√
V9500	√	√	√	-	-
HMT200A	√	√	√	-	-
W21	-	-	√	-	-
Without Adhesive	√	√	√	√	√

Standard combinations	
Article-No.	Type
404-11180	411-1-G
404-03180	403-1-G
404-13180	413-1-G

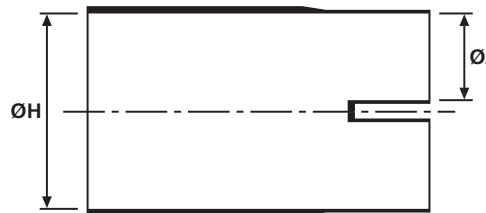
4-Way Outlet Shapes, Breakout Boots

- Helashrink 400 Series, in line, low voltage

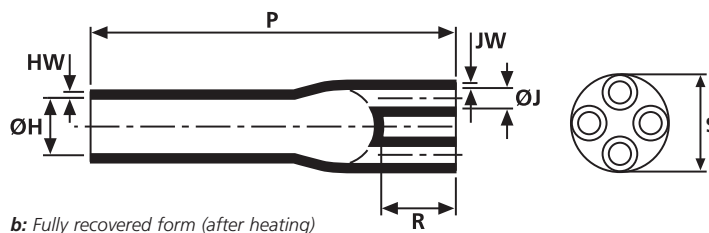
Branching parts are used for easy, time-saving insulation of the branch point of a cable where it is split into single wires. They are manufactured from a tough cross-linked flame retarded polyolefin. Branching parts with hot melt adhesive also serve to relieve the mechanical tension in cable harnesses whilst providing excellent IP ratings.



442-1 supplied / fully recovered.



a: Expanded form (supplied)



b: Fully recovered form (after heating)

For Material / Adhesive selection and other information please refer to page 10.

Sizes and Type Table									
Type	ØH min. a	ØH max. b	ØJ min. a	ØJ max. b	P ± 10%	R ± 10%	HW ± 20%	JW ± 20%	S nom
442-1	28.0	9.0	9.0	1.8	78.0	17.0	2.7	2.0	20.0
434-2	23.0	11.0	8.0	2.8	78.0	22.0	1.6	1.6	18.0
443-1	35.0	12.0	15.0	3.0	132.0	26.0	3.0	2.5	22.0
408-2	35.0	12.0	15.0	3.0	95.0	24.0	2.5	2.0	22.0
435-2	32.0	20.3	13.0	4.8	93.5	28.5	2.9	2.9	27.0
409-2	47.4	22.9	21.5	6.4	165.0	38.1	4.1	3.3	38.1
418-4	60.0	22.9	30.0	6.4	202.0	38.1	4.1	3.3	38.1
436-2	45.0	24.9	21.0	7.1	99.0	34.0	4.5	4.5	39.0
437-1	60.0	25.4	26.0	8.9	240.0	48.0	4.5	4.5	43.0
438-2	68.0	35.6	31.0	13.5	141.5	42.5	4.5	4.5	54.0
444-2	35.6	95.0	35.6	12.5	240.0	55.0	4.0	3.5	50.8

All dimensions in mm. Subject to technical changes.

Combinations "On request"					
Adhesive	Material				
	B7	G	H	B8	J
W	√	√	√	√	√
W2	√	√	√	√	-
W24	√	√	√	-	√
V9500	√	√	-	-	√
HMT200A	√	√	-	√	√
W21	-	-	√	-	√
Without Adhesive	√	√	√	√	√

Standard combinations	
Article-No.	Type
404-42022	442-1-B8W
404-34017	434-2-G
404-43002	443-1-B8
404-08022	408-2-B8W2
404-35007	435-2-J
404-09021	409-2-B8W2
404-18020	418-4-B8W2
404-37001	437-1-B7
404-38008	438-2-J
404-44022	444-2-B8W2

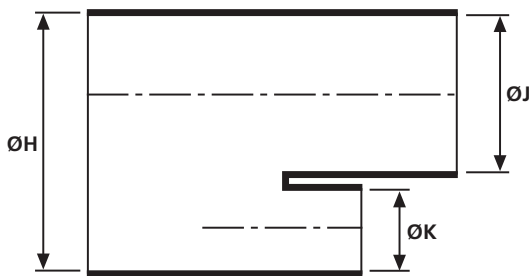
T-Shapes, VG style

• Helashrink 1200 Series

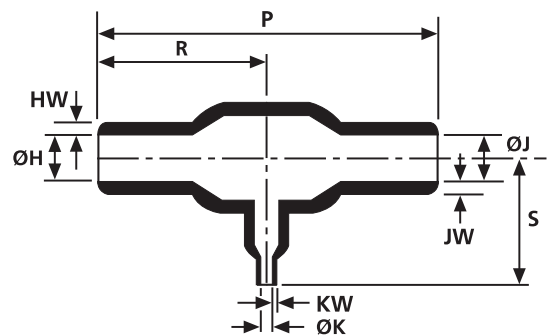
This style provides strain relief, sealing and mechanical protection on cable harnesses. For VG shapes with portholes "P" please refer to product standards tables in the appendix.



1202-1-G recovered onto a cable harness.



a: Expanded form (supplied)



b: Fully recovered form (after heating)

Sizes and Type Table

Type	Designation as per VG-Norm	ØH/J min. a	ØH/J max. b	ØK min. a	ØK max. b	P ± 10%	R ± 10%	HW ± 20%	JW ± 20%	S ± 10%	KW ± 20%
1206-1	VG95343T08A009A	6.6	3.0	6.6	3.0	29.7	14.7	1.0	1.0	14.7	1.0
1203-1	VG95343T08A001A	13.2	6.0	6.5	3.0	52.0	26.0	1.5	1.5	19.3	1.0
1202-1	VG95343T08A010A	13.2	6.1	13.2	6.1	58.7	29.2	1.5	1.5	29.2	1.5
1205-1	-	17.7	8.9	7.6	3.8	50.8	25.4	1.5	1.5	25.4	1.0
1201-1	VG95343T08A007A	17.7	8.9	10.1	5.1	47.5	23.6	1.5	1.5	23.6	1.0
1209-1	VG95343T08A002A	27.0	12.4	13.2	6.0	108.0	54.0	2.5	2.5	38.6	1.5
1207-1	VG95343T08A011A	26.9	12.4	26.9	12.4	120.1	55.9	2.5	2.5	59.9	2.5
1203-1	-	13.0	6.0	6.5	3.0	52.0	26.0	1.5	1.5	19.3	1.0

All dimensions in mm. Subject to technical changes.

For Material / Adhesive selection and other information please refer to page 10.

Combinations "On request"

Adhesive	Material				
	B7	G	J	H	L
WM250	√	√	√	√	-
W8	√	√	√	√	-
W24	√	√	√	√	√
V9500	√	√	√	√	-
HMT200A	√	√	√	√	-
W21	-	-	-	√	-
Without Adhesive	√	√	√	√	√

Standard combinations

Article-No.	Type
412-06180	1206-1-G
412-03180	1203-1-G
412-02180	1202-1-G
412-05180	1205-1-G
412-01180	1201-1-G
412-09180	1209-1-G
412-07180	1207-1-G
412-03001	1203-1-B7

T-Shapes

• **Helashrink 1200 Series, Offset**

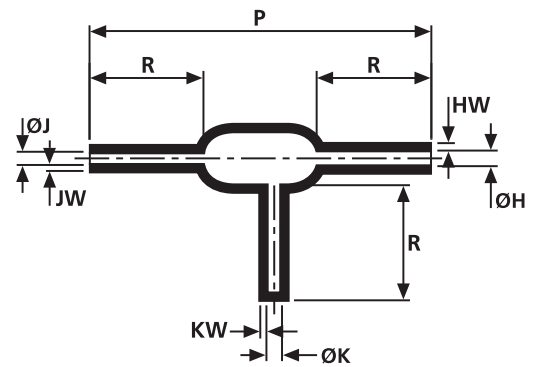
This style provides strain relief, sealing and mechanical protection where a cable transition is required on the harness, it is recommended that an adhesive be used if environmental sealing is required.



1217-1 supplied / fully recovered.



a: Expanded form (supplied)



b: Fully recovered form (after heating)

Sizes and Type Table											
Type	ØH min. a	ØH max. b	ØJ min. a	ØJ max. b	ØK min. a	ØK max. b	P ± 10%	R ± 10%	HW ± 20%	JW ± 20%	KW ± 20%
1217-1	10.0	2.6	6.0	2.2	6.0	2.6	57.0	19.0	1.0	1.0	1.0
1222-1	31.0	15.2	18.0	8.9	25.0	15.0	92.0	52.0	2.3	1.8	2.3
1223-1	29.5	16.3	9.6	5.3	29.5	16.3	93.2	56.6	2.5	1.8	2.5

All dimensions in mm. Subject to technical changes.

Combinations "On request"					
Adhesive	Material				
	B7	G	J	H	L
WM250	√	√	√	√	-
W8	√	√	√	√	-
W24	√	√	√	√	√
V9500	√	√	√	√	-
HMT200A	√	√	√	√	-
W21	-	-	-	√	-
Without Adhesive	√	√	√	√	√

Standard combinations	
Article-No.	Type
412-17003	1217-1-G
412-22002	1222-1-G
412-23003	1223-1-HP

T-Shapes, VG style

• Helashrink 1200 Series, Offset

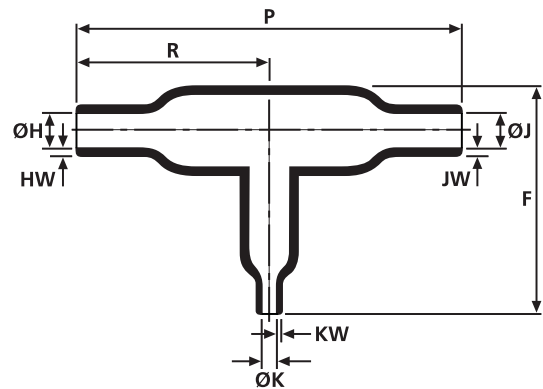
This style provides strain relief, sealing and mechanical protection where a cable transition is required on the harness, it is recommended that an adhesive be used if enviromental sealing is required.



1204-1 supplied / fully recovered.



a: Expanded form (supplied)



b: Fully recovered form (after heating)

Sizes and Type Table														
Type	Designation as per VG-Norm	ØH min. a	ØH max. b	ØJ min. a	ØJ max. b	ØK min. a	ØK max. b	P ± 10%	R ± 10%	HW ± 20%	JW ± 20%	KW ± 20%	S ± 10%	F ± 15%
1204-1	VG95343T08A016A	13.0	7.5	6.5	4.0	6.5	4.0	56.0	33.0	1.5	1.0	1.0	-	27.0
1216-1	VG95343T08A017A	33.0	13.0	16.5	6.5	16.5	6.5	97.0	54.0	2.5	1.5	1.5	38.5	-
1226-1	-	30.5	15.2	17.8	8.9	17.8	8.9	81.3	47.5	2.3	1.3	1.3	38.1	-

All dimensions in mm. Subject to technical changes.

For Material / Adhesive selection and other information please refer to page 10.

Combinations "On request"					
Adhesive	Material				
	B7	G	J	H	L
WM250	√	√	√	√	-
W8	√	√	√	√	-
W24	√	√	√	√	√
V9500	√	√	√	√	-
HMT200A	√	√	√	√	-
W21	-	-	-	√	-
Without Adhesive	√	√	√	√	√

Standard combinations	
Article-No.	Type
412-04180	1204-1-G
412-16180	1216-1-G
412-26002	1226-1-G