

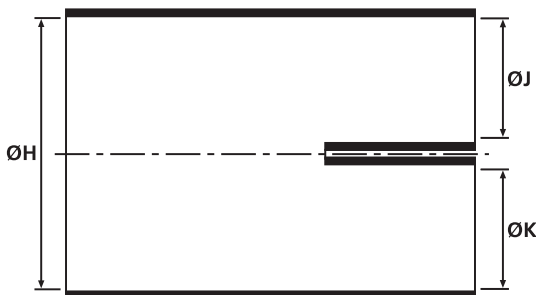
### 2-Way Outlet Shapes

- Helashrink 200 Series, low profile

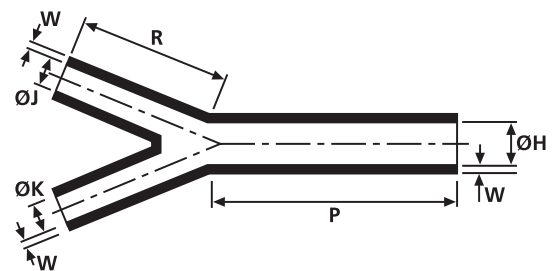
Branching parts are employed for mechanical tension relief in harnesses, where multi core cables are required to be routed out in different directions. High ratio expansion allows for quick and easy installation times.



203-1-G supplied / fully recovered.



a: Expanded form (supplied)



b: Fully recovered form (after heating)

For Material / Adhesive selection and other information please refer to page 10.

Sizes and Type Table

Type	ØH min. a	ØH max. b	ØJ min. a	ØJ max. b	ØK min. a	ØK max. b	P ± 10%	R ± 10%	W ± 20%
201-1	19.0	9.4	6.4	14.0	6.4	14.0	50.8	30.5	1.5
201-3	24.5	9.4	14.0	6.4	14.0	6.4	50.8	30.5	1.5
202-1	19.0	9.4	7.6	3.8	7.6	3.8	50.8	30.5	1.5
202-2	20.0	9.4	12.5	3.8	12.5	3.8	50.8	30.5	1.5
202-3	24.5	9.4	16.0	3.8	16.0	3.8	50.8	30.5	1.5

All dimensions in mm. Subject to technical changes.

Combinations "On request"

Adhesive	Material				
	B7	G	J	H	B8
WM250	√	√	√	√	√
W8	√	√	√	√	-
W24	√	√	√	√	-
V9500	√	√	√	-	-
HMT200A	√	√	√	-	√
W21	-	-	-	-	-
Without Adhesive	√	√	√	√	√

Standard combinations

Article-No.	Type
402-01180	201-1-G
402-01020	201-3-G
402-02004	202-1-G
402-02011	202-2-G
402-02019	202-3-G

2-Way Outlet Shapes, VG style

• Helashrink 200 Series

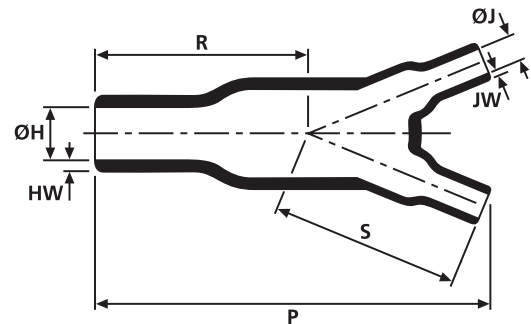
Branching parts are employed for mechanical tension relief in cable harnesses. For VG shapes with portholes "P" please refer to product standards tables in the appendix.



203-1-G supplied / fully recovered.



a: Expanded form (supplied)



b: Fully recovered form (after heating)

Sizes and Type Table										
Type	Designation as per VG-Norm	ØH min. a	ØH max. b	ØJ min. a	ØJ max. b	P ± 10%	R ± 10%	HW ± 20%	JW nom	S nom
206-1	VG95343T08C001A	13.0	6.0	7.0	3.0	41.0	19.0	1.5	1.0	19.0
213-1	-	17.3	7.9	11.1	7.9	140.0	83.1	2.3	1.0	64.0
213-2	-	40.0	8.5	31.8	7.9	140.0	83.1	2.3	2.3	64.0
212-1	VG95343T08C005A	14.5	8.0	8.5	5.5	136.0	83.0	2.3	2.0	63.0
203-1	VG95343T08C002A	27.0	12.0	13.0	6.0	80.0	43.0	2.5	1.5	43.0
204-1	VG95343T08C003A	39.0	18.0	27.0	12.0	131.0	81.0	3.1	2.0	81.0

All dimensions in mm. Subject to technical changes.

Combinations "On request"					
Adhesive	Material				
	B7	G	J	H	L
WM250	√	√	√	√	-
W8	√	√	√	√	-
W24	√	√	√	√	√
V9500	√	√	√	-	-
HMT200A	√	√	√	-	-
W21	-	-	-	√	-
Without Adhesive	√	√	√	√	√

Standard combinations	
Article-No.	Type
402-06180	206-1-G
402-13180	213-1-G
402-13021	213-2-G
402-12180	212-1-G
402-03180	203-1-G
402-04180	204-1-G

### 2-Way Outlet Shapes, Breakout Boots

- Helashrink 200 Series, in line, low voltage

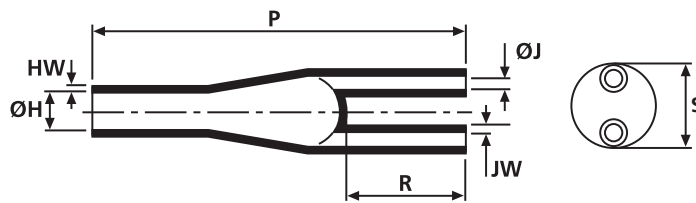
Branching parts are used for easy, time-saving insulation of the branch point of a cable where it is split into single wires. Branching parts with hot melt adhesive also serve to relieve the mechanical tension in cable harnesses.



223-2 supplied / fully recovered.



a: Expanded form (supplied)



b: Fully recovered form (after heating)

Cable breakouts are available for 2, 3, 4, 5 and 6 core cables.

For Material / Adhesive selection and other information please refer to page 10.

Sizes and Type Table									
Type	ØH min. a	ØH max. b	ØJ min. a	ØJ max. b	P ± 10%	R ± 10%	HW ± 20%	JW ± 20%	S nom
223-2	33.0	9.4	17.5	4.1	94.0	30.0	1.5	1.2	20.0
216-2	28.0	9.4	12.0	2.8	76.5	20.0	1.6	1.6	-
217-2	31.0	15.2	13.0	4.3	99.5	28.5	2.2	2.2	-
218-2	49.0	22.9	20.0	7.6	119.0	34.0	3.2	3.2	-
220-1	50.0	28.0	23.0	8.0	175.0	100.0	2.5	2.0	33.0
219-2	77.0	38.1	37.0	12.7	141.5	42.5	3.8	3.8	44.0

All dimensions in mm. Subject to technical changes.

Combinations "On request"				
Adhesive	Material			
	B7	G	H	B8
W	√	√	√	√
W2	√	√	√	√
V9500	√	√	√	-
HMT200A	√	√	√	√
W21	-	-	√	-
Without Adhesive	√	√	√	√

Standard combinations	
Article-No.	Type
402-23058	223-2-B8W
402-16038	216-2-B7WM250
402-17014	217-2-B7
402-18020	218-2-B7
402-20008	220-1-B7
402-19020	219-2-B8

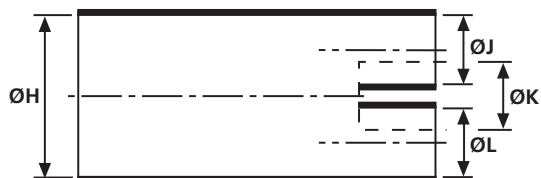
### 3-Way Outlet Shapes, VG style

• Helashrink 300 Series

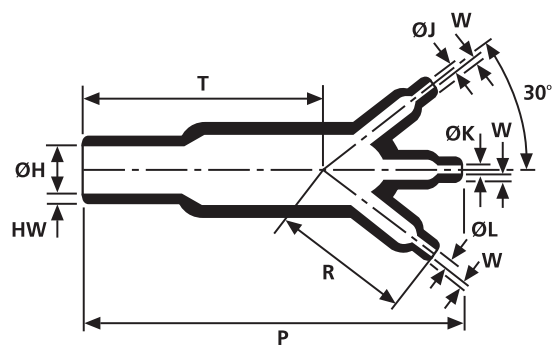
This style provides cable strain relief and mechanical protection at harness transition points, all outlets are clearly marked to aid orientation on installation.



304-1-G supplied / fully recovered.



a: Expanded form (supplied)



b: Fully recovered form (after heating)

Sizes and Type Table										
Type	Designation as per VG-Norm	ØH min. a	ØH max. b	ØJ/K/L min. a	ØJ/K/L max. b	P ± 10%	R ± 10%	HW ± 20%	W ± 20%	T ± 10%
306-1	VG95343T08D001A	13.0	6.5	6.5	3.5	46.0	25.4	1.3	1.0	20.3
304-1	VG95343T08D002A	27.0	13.5	13.0	7.0	93.0	50.3	2.5	1.5	42.9
310-1	VG95343T08D003A	38.5	19.0	19.0	10.0	135.0	73.7	3.1	1.8	61.0
311-1	VG95343T08D004A	55.5	25.5	27.0	12.5	192.0	103.1	4.6	3.1	88.9

All dimensions in mm. Subject to technical changes.

Combinations "On request"					
Adhesive	Material				
	B7	G	J	H	L
WM250	√	√	√	√	-
W8	√	√	√	√	-
W24	√	√	√	√	√
V9500	√	√	√	√	-
HMT200A	√	√	√	√	-
W21	-	-	-	√	-
Without Adhesive	√	√	√	√	√

Standard combinations	
Article-No.	Type
403-06180	306-1-G
403-04180	304-1-G
403-10180	310-1-G
403-11180	311-1-G

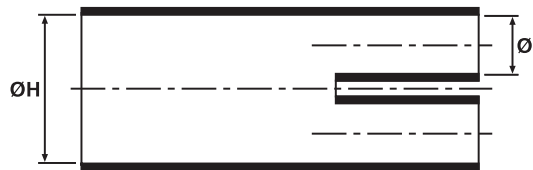
### 3-Way Outlet Shapes, Breakout Boots

- Helashrink 300 Series, in line, low voltage

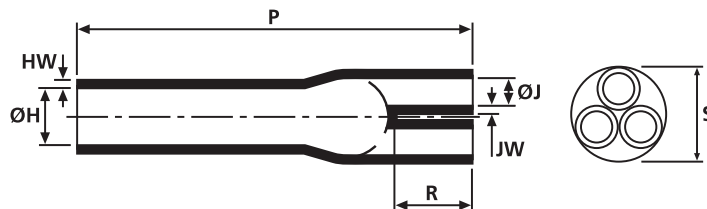
Branching parts are used for easy, time-saving insulation of the branch point of a cable where it is split into single wires. Branching parts with hot melt adhesive also serve to relieve the mechanical tension in cable harnesses.



300 Series supplied / fully recovered.



a: Expanded form (supplied)



b: Fully recovered form (after heating)

For Material / Adhesive selection and other information please refer to page 10.

Sizes and Type Table									
Type	ØH min. a	ØH max. b	ØJ min. a	ØJ max. b	P ± 10%	R ± 10%	HW ± 20%	JW ± 20%	S nom
318-1	23.0	9.1	9.0	3.0	76.5	20.0	2.5	2.5	16.0
339-2	39.0	12.7	17.0	4.1	102.0	56.0	2.9	2.9	26.0
319-1	31.0	17.5	13.0	4.6	93.5	28.5	2.9	2.9	23.0
328-2	44.0	22.8	21.0	7.6	99.0	34.0	3.8	3.8	-
342-1	110.0	35.0	40.0	17.5	230.0	45.0	4.0	3.5	65.0
330-2	61.0	35.5	32.0	12.7	144.5	45.5	3.8	3.8	47.0
340-2	82.0	50.8	36.0	19.1	144.5	45.5	4.5	4.5	65.0
341-1	125.0	59.0	50.8	25.4	283.0	71.0	3.8	3.8	75.0

All dimensions in mm. Subject to technical changes.

Combinations "On request"					
Adhesive	Material				
	B7	G	H	B8	J
W	√	√	√	√	√
W2	√	√	√	√	-
WM250	√	√	√	√	√
V9500	√	√	-	-	√
HMT200A	√	√	-	√	√
W21	-	-	√	-	√
Without Adhesive	√	√	√	√	√

Standard combinations	
Article-No.	Type
403-18018	318-1-G
403-39017	339-2-G
403-19022	319-1-G
403-28015	328-2-J
403-42006	342-1-B8W2
403-30014	330-2-B7WM250
403-41005	341-1-B8W2