

Description

The battery master switch E-1032-... allows remotely controlled connection and disconnection of the battery. In the event of reverse connection the battery will be disconnected from the vehicle electrical system.

Typical applications

Commercial vehicles

Ordering information

| | |
|----------------------------------------------------------------------------------|-----------------------------|
| Type No. | |
| E-1032 | |
| Version | |
| NA1 | single pole |
| NA2 | double pole |
| Enclosure | |
| C | with moulded enclosure IP65 |
| Isolation switch | |
| 921 | single pole switch |
| 922 | double pole switch |
| Voltage rating | |
| DC 24 V | |
| DC 12 V | |
| Variant No. | |
| e.g. special versions, mounting plate. Designation determined by manufacturer | |
| E-1032 - NA1 - C 921 - DC 24 V - ... ordering example | |



E-1032

Technical data

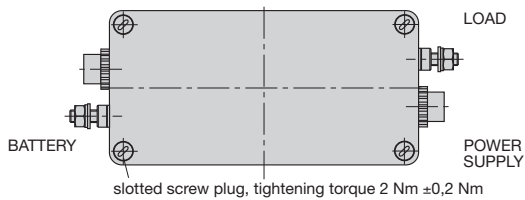
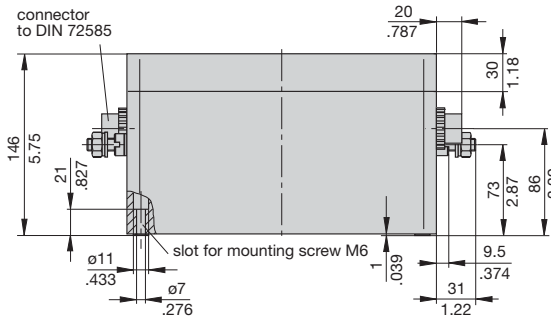
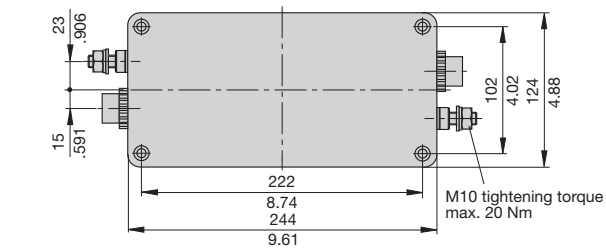
| | | |
|----------------------------------------------------------------------------------------------------------------------------------------------------------------------------------------------|-----------------------------------------------------------------------------------------------------------------------------------------------------------------------------------------------|------------------------------------------|
| Voltage rating | DC 24 V | DC 12 V |
| Voltage rang | ON 18 - 32 V | 9 - 16 V |
| | OFF 15 - 32 V | 8.5 - 16 V |
| The switching function is no longer ensured when the voltage falls below the minimum values. The switch will not change its position when the voltage falls down to 0 V (automatic locking). | | |
| Current ratings | 240 A single pole 120 A double pole | |
| Overload capacity | 2,500 A for 1 s at 23 °C, single pole 1,500 A for 1 s at 23 °C, double pole | |
| Current consumption of the electronics | ≤ 15 mA (with the control circuit connected) | |
| Switching current at U_N | DC 24 V: | DC 12 V: |
| | ON approx. 15A/100 ms OFF approx. 12A/100 ms | approx. 20A/100 ms approx. 10A/100 ms |
| Control circuit | 4 - 6 mA ON | |
| Control switch (accessory) | with coding resistance DC 24 V: 1 kΩ DC 12 V: 330 Ω without coding resistance to ADR for external actuation | |
| Temperature range | -40...+75 °C (-40...+167 °F) | |
| Reverse polarity protection | If polarized incorrectly, the Master Switch will switch off immediately, disconnecting the entire vehicle electrical system. After approx. 30 s the circuit breaker of the ON coil will trip. | |
| Resettability | When the Battery Master Switch is mechanically switched off, it will be reset immediately by the electronics. | |
| Typical life | 10,000 operations at I_N 20,000 operations, mechanical | |
| Degree of protection IEC 60529/DIN40050) | housing IP65 terminal studs with rubber cap IP54 | |
| Vibration | 5 g (57-200 Hz), ± 0.38 mm (10-57 Hz) to IEC 60068-2-6, test Fc, 10 frequency cycles/axis | |
| Shock | 25 g (11 ms) direction 1, 2, 3, 4 15 g (11 ms) direction 5, 6 to IEC 60068-2-27, test Ea | |
| Corrosion | 96 h at 5 % salt mist, to IEC 60068-2-11, test Ka | |
| Humidity | 240 h at 95 % RH, to IEC 60068-2-78, test Cab | |
| Terminals | | |
| Main terminals | blade terminals with cable lugs for M10 terminal studs | |
| Control cable | connector to DIN 72585 | |

Technical data

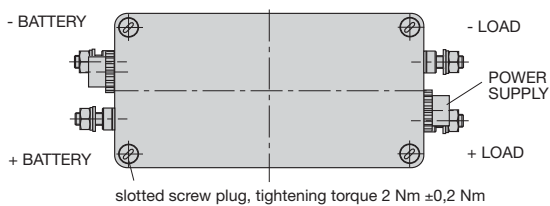
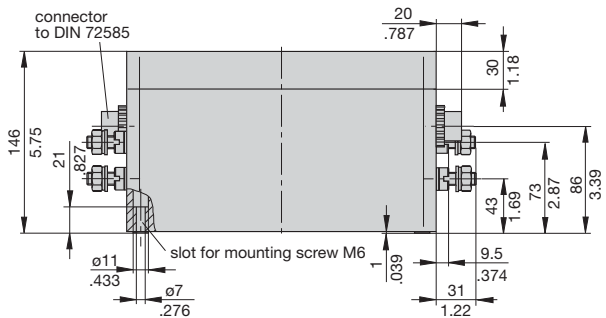
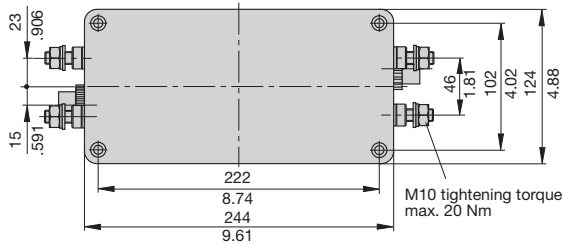
| | |
|---------------------------------------|----------------------------------------------------------------------------------------------|
| Auxiliary contact for auxiliary relay | max. 6 A (circuit not protected) |
| Mass | single pole: approx. 3,500 g with enclosure, double pole: approx. 3,700 g with enclosure, |

Dimensions

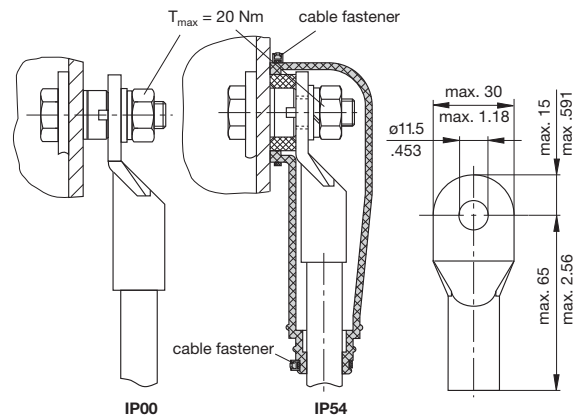
E-1032-NA1-... 1 pole



E-1032-NA2-... 2 pole

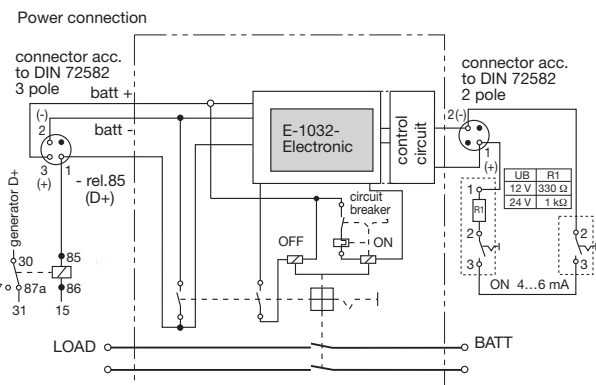


Rubber cap

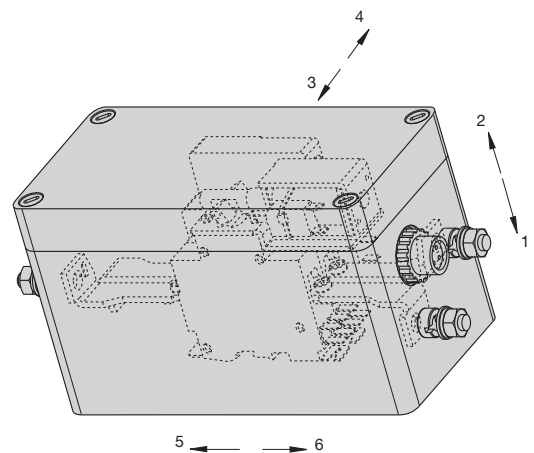


Rubber caps and cable fasteners are supplied with the product.

Internal connection diagrams



Shock directions

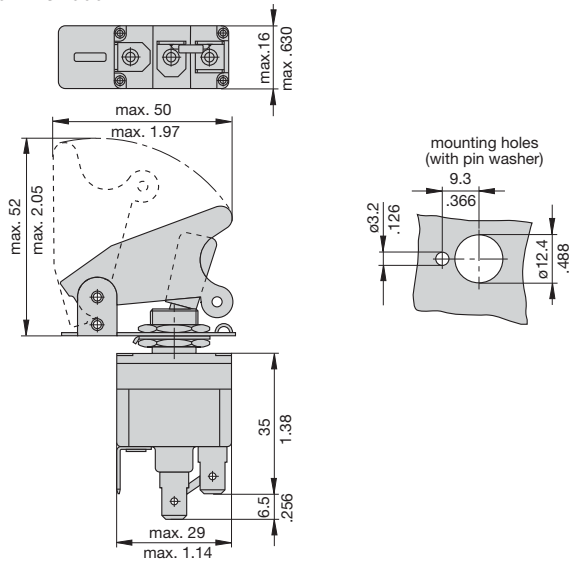


Please follow the instructions for installation

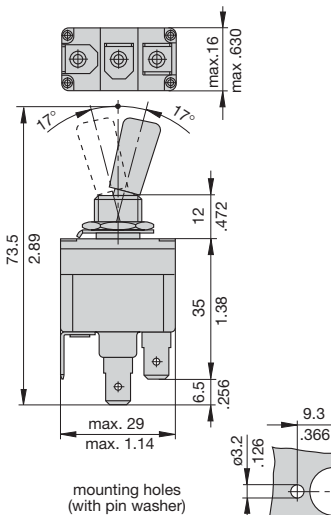
This is a metric design and millimeter dimensions take precedence (mm / inch)

Accessories

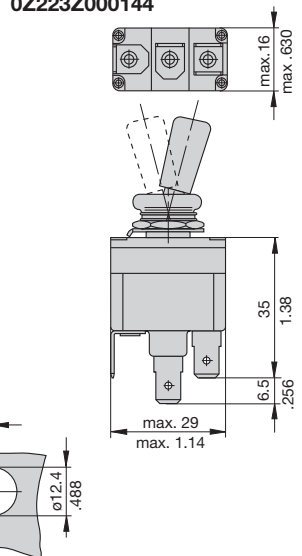
ADR switch with safety cover OZ223Z000141 12 V OZ223Z000142 24 V



ADR switch without rubber boot OZ223Z000143



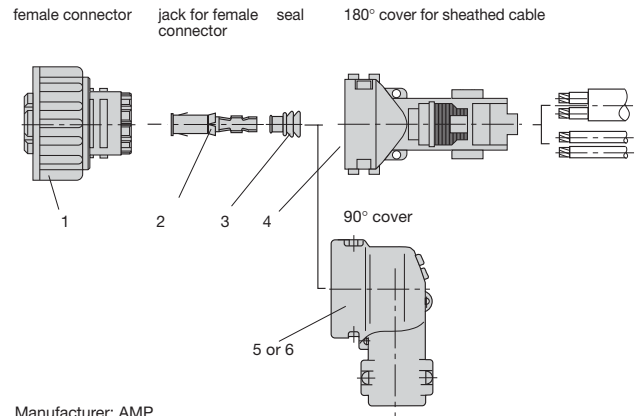
ADR switch with rubber boot (IP54 in operating area) OZ223Z000144



Standard connector set OZ112Z000179, comprising:

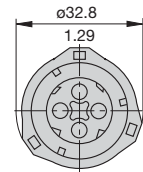
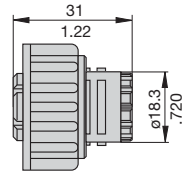
(AMP-parts) suitable for single/double pole Battery Master Switch E-1032-..., DC 12 V and DC 24 V

| Quantity | Designation | Ref. No. |
|---------------|----------------------------------------|--------------|
| 1 | female connector, 3-pole | X 221 378 01 |
| 1 | female connector, 2-pole | X 221 378 02 |
| 5+1 replacem. | jack for female connector | Y 306 501 01 |
| 5+1 replacem. | seal | Y 306 502 01 |
| 2 | 90 ° cover corrugated conduit NW 10 | Y 306 499 01 |

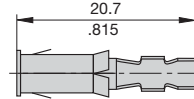


Manufacturer: AMP

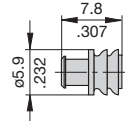
- Female connector SW
X 221 378 02 2-way
X 221 378 01 3-way
X 221 378 03 4-way



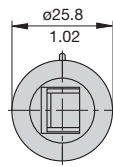
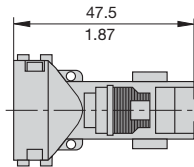
- Jack for female connector
Y 306 501 01



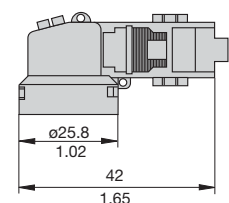
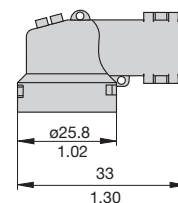
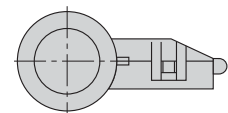
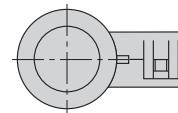
- Seal
Y 306 502 01



- 180° cover for sheathed cable
Y 306 500 01



- 90° cover for
corrugated conduit NW10
Y 306 499 01



This is a metric design and millimeter dimensions take precedence ($\frac{\text{mm}}{\text{inch}}$)

All dimensions without tolerances are for reference only. In the interest of improved design, performance and cost effectiveness the right to make changes in these specifications without notice is reserved. Product markings may not be exactly as the ordering codes. Errors and omissions excepted.